



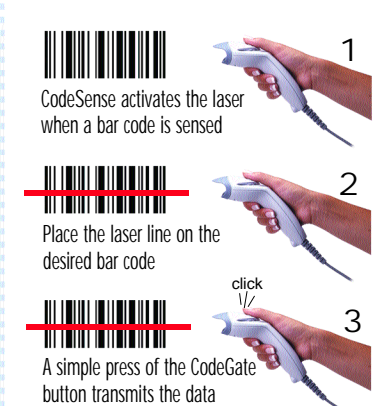
MS5145 Eclipse™ is a single-line, hand-held laser scanner. Equipped with CodeGate® technology, Eclipse can easily target the desired bar code and complete the data transmission with a simple press of a button.

MS5145 Eclipse™

Features

- **CodeGate™ data transmission technology ideal for menu-scanning**
- **Popular USB and Keyboard Wedge interfaces built into one unit**
- **PowerLink user replaceable cables**
- **Remote-control style button reduces fatigue**
- **Custom edit the bar code data**
- **OPOS and JPOS system compatible**
- **Easy to program using Windows-based utility or bar code menus**

CodeGate Gives You Total Control Over What You Scan!



Metrologic's MS5145 Eclipse is a single-line, hand-held laser scanner. Equipped with Metrologic's patented CodeGate technology, Eclipse can be used in a wide variety of applications. CodeGate technology allows the user to easily target the desired bar code and complete the data transmission with a simple press of a button. This combination makes Eclipse a perfect selection for menu scanning, point-of-sale, document processing and inventory control.

With Metrologic's state-of-the-art scanning technology embedded inside, the MS5145 Eclipse has a longer working range and a wider scan

field than a typical CCD. The width of the scan line grows as the scanner moves further away from bar codes. In addition, the laser beam pulses which make lining up bar codes easy, and when the scanner senses a bar code (CodeSense™ Mode), the laser beam automatically switches to scan mode and activates CodeGate to ensure high-speed scanning and accuracy.

Many of the standard features include: PowerLink user-replaceable cables, Bits 'n' Pieces® data editing, user friendly programming using MetroSelect® bar codes, or MetroSet® 2 Windows-based configuration utility.



MS5145 Eclipse™

OPERATIONAL

Light Source	Visible Laser Diode 650 nm ± 5 nm
Laser Power	< 1.0 mW @ peak power
Depth of Scan Field	0 mm - 140 mm (0" - 5.5") for 0.33 mm (13 mil) bar codes
Width of Scan Field	49 mm (1.9") @ face; 195 mm (7.7") @ 140 mm (5.5")
Scan Speed	72 scan lines per second
Scan Pattern	Single scan line
Minimum Bar Width	0.102 mm (4.0 mil)
Decode Capability	Autodiscriminates all standard barcodes, for other symbologies call Metrologic
System Interfaces	PC Keyboard Wedge, RS232, Stand Alone Keyboard, USB
Print Contrast	35% minimum reflectance difference
Number Characters Read	Up to 80 data characters
Roll, Pitch, Yaw	42°, 68°, 52°
Beeper Operation	7 tones or no beep
Indicators (LED)	Green = laser on, ready to scan; Red = good read

MECHANICAL

Length	169 mm (6.7")
Width	Head: 63 mm (2.5") Handle: 40 mm (1.6")
Height	Head: 35 mm (1.4") Handle: 31 mm (1.2")
Weight (w/o cable)	97 g (3.41 oz)
Termination	10 pin modular RJ45
Cable	Standard 1.5 m (5') straight; optional 2.7 m (9') coiled

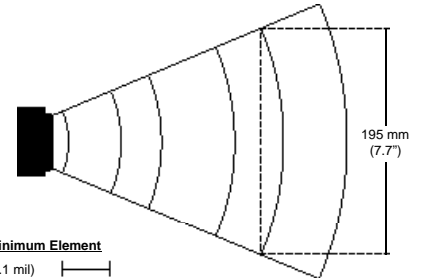
ELECTRICAL

Input Voltage	5 VDC ± 0.25 V
Power	675 mW
DC Transformers	Class 2; 5.2 VDC @ 200 mA; or Class 2, 5.2 VDC @ 650 mA
Operating Current	135 mA @ 5 VDC
Laser Class	CDRH Class II; IEC 60825-1:1993+A1:1997+A2:2001 Class 1
EMC	Class B: FCC Part 15, ICES-003, European Union EMC Directive

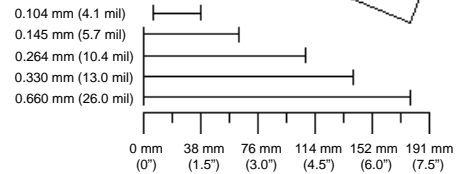
ENVIRONMENTAL

Operating Temperature	0°C to 40°C (32°F to 104°F)
Storage Temperature	-40°C to 60°C (-40°F to 140°F)
Humidity	5% to 95% relative humidity, non-condensing
Shock	Designed to withstand 1.5 m (5') drops
Light Levels	Up to 4842 lux (450 footcandles)
Contaminants	Sealed to resist airborne particulate contaminants
Ventilation	None required

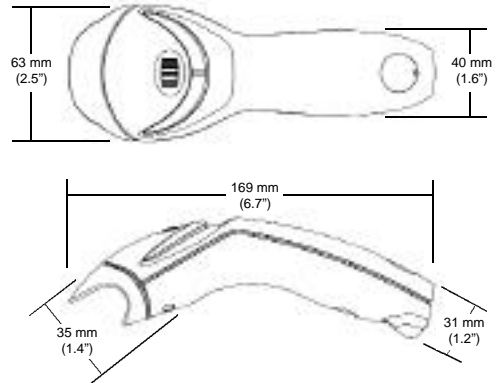
Scan Area



Bar Code Minimum Element



Dimensions



www.metrologic.com

USA
Tel. 1.800.ID.METRO
info@metrologic.com

Asia
Tel. 65.842.7155
info@sg.metrologic.com

AOA (only)
Tel. 1.617.806.1400
info@aoa.metrologic.com

China (only)
Tel. 86.512.2572511
info@cn.metrologic.com

South America
Tel. 55.11.5182.7273
info@sa.metrologic.com

Japan (only)
Tel. 81.03.3839.8511
info@jp.metrologic.com

Brazil (only)
Tel. 55.11.5182.8226
info@br.metrologic.com

Europe
Tel. 49.89.89019.0
info@europe.metrologic.com

Specifications subject to change without notice.
Printed U.S.A., Copyright October 2001
Metrologic, All rights reserved.



DS5145